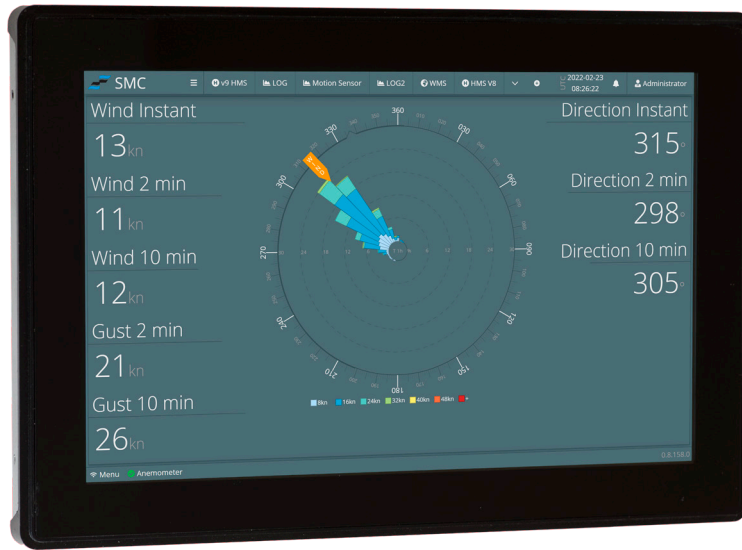


SMC-1310 Wind Display

for Wind and Weather Display



The SMC-1310 Wind and Weather Panel Display is a stand-alone device for easy to read Wind and Weather data. The device can be configured as a Wind Display or a Weather Display

Wind Display

The SMC-1310 when configured as a Wind Display presents the live wind speed and direction along with the calculated Wind 2min and 10min averages, Wind Gust 2min and 10min maxes as well as a graphical layout in a Compass Rose. The data display is configurable from the settings to match the user Wind Display preferences.

Weather Display

The SMC-1310 when configured as a Weather Display presents the typical layout for Wind, Temperature, Humidity and Pressure data. Other instruments can be used and configured in the same graphical layout.

General Function

The weather data is processed and logged and can also be displayed in user selectable trend charts in addition to the main screen display.

The data is presented on an easy to read 10.1 inch high resolution 1280x800, capacitive touch screen with a 800 cd/m² brightness for usage in bright environments.

The Weather Panel Device accepts Serial RS232/RS422/RS485 and Ethernet UDP/TCP instrument inputs and can also output data multiple formats for third party systems.

The graphical display and logged data can be accessed remotely over the LAN via a web interface using a standard browser.

Data Log

All data is stored in the 4 GB built-in emmc memory drive. The data is time stamped and stored in a SQL database. The data can be viewed using the built-in log view and can be exported to third party systems using a comma separated text file. Data Log data can be sent via automatic e-mail at scheduled times.

Key Features

- Wind and Weather Display
- Industrial design
- Display system Accessible over LAN/WAN as standard
- 4GB emmc for logging
- Security Roles

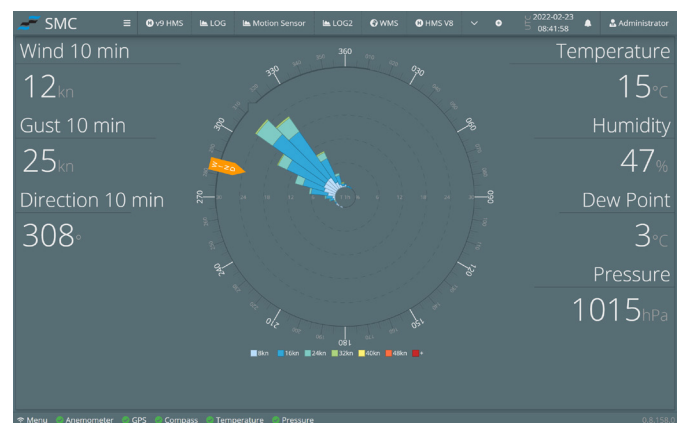
External systems

The SMC-1310 has built-in functionality to communicate with third-party systems via Modbus RTU/UDP and SNMP protocol. Features also include data transfer to remote SMC systems.

User settable alarms are configurable for all parameters with system displayed messages and outputs sent via e-mail.

About SMC

SMC is an ISO9001:2015 quality management certified company, manufacturing motion sensors and system integration software packages, environmental and weather monitoring systems.



Weather Interface

Specification

System Specification

Processor	ARM based processor
Operating System	Linux
Storage	8 GB, 4 GB for logging
RAM	2 GB
Display size	10.1 inch
Brightness	800 cd/m ²
Aspect Ratio	16:10
Resolution	1280x800
Viewing angle	89 degrees
Touch Type	Capacitive
Mounting	VESA 75x75mm

External Output

Serial, Ethernet, SNMP, Modbus TCP/RTU,

Security Roles

Administrator, Operators, Technicians, Limited

Logging

Logging of all interfaced and processed parameters, Usage approx. 10 GB data per year
Built in Backup features

Interface Built-in

Serial 4xRS232 or 2xRS422/485
USB Type A for System Expansion
Ethernet

Environmental

Operating Temperature Range 0° to +50° Celsius
IP rating IP22
Power requirements 12-36 VDC
Power Consumption 20W

Support

Free Technical remote support

